

2×1, 3×1, 4×1 Pump Combiner

1. Description:

This N×1 (N=2, 3, 4) multi-mode pump combiner is designed for high power fiber laser applications. It combines the power from N multimode lasers to create a high-power output with consigned fibers. It has a heat sink package and a hole for temperature monitoring.

2. Features:

- High Power Transfer Efficiency
- Wavelength Insensitivity
- Custom Configurations Available



N×1 combiner

3. Specifications:

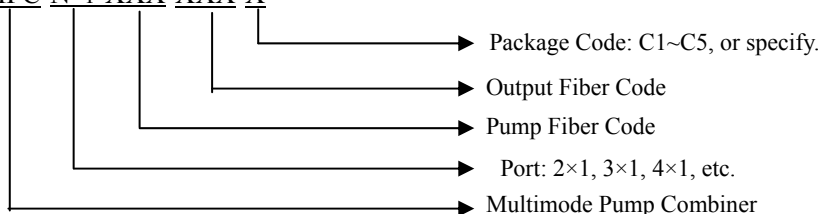
Type	Working WL (nm)	Pump fiber	Output fiber	Pump Effi.	Remark	Package Options
				Spec.		
2×1	800-1000	105/125 0.12	105/125 0.22	90%	Test at 915nm LD	C1, C2, C3
2×1	800-1000	105/125 0.15	105/125 0.22	85%	Test at 915nm LD	C1, C2, C3
3×1	800-1000	105/125 0.12	105/125 0.22	85%	Test at 915nm LD	C1, C2, C3
3×1	800-1000	105/125 0.15	200/220 0.22	93%	Test at 915nm LD	C1, C2, C3
3×1	800-1000	105/125 0.22	125 0.46	93%	Test at 915nm LD	C1, C2, C3
3×1	800-1000	105/125 0.22	200/220 0.22	90%	Test at 915nm LD	C1, C2, C3
3×1	800-1000	105/125 0.22	200/220 0.22	88%	Test at 915nm LD	C1, C2, C3
4×1	1550	SMF-28e	105/125 0.15	90%	Test at 1550nm single mode	C1, C2, C3
4×1	1550	SMF-28e	50/125 MMF	90%	Test at 1550nm single mode	C1, C2, C3
4×1	1550	SMF-28e	62.5/125 MMF	90%	Test at 1550nm single mode	C1, C2, C3
4×1	800-1000	105/125 0.15	125 0.46	90%	Test at 915nm LD	C1, C2, C3
4×1	800-1000	105/125 0.15	200/220 0.22	90%	Test at 915nm LD	C1, C2, C3
4×1	800-1000	105/125 0.22	125 0.46	90%	Test at 915nm LD	C1, C2, C3

We recommend customer use above [blue](#) package, combiner package options as follows:

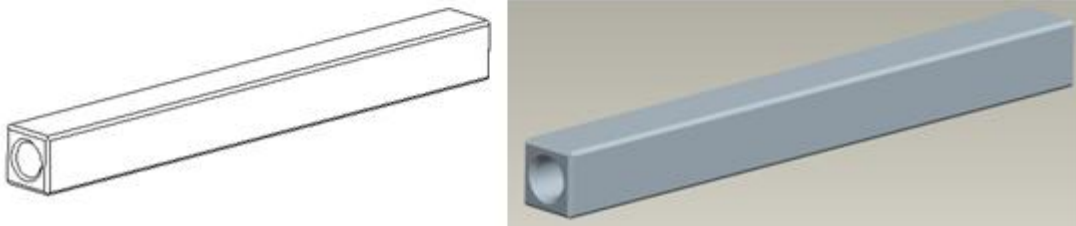
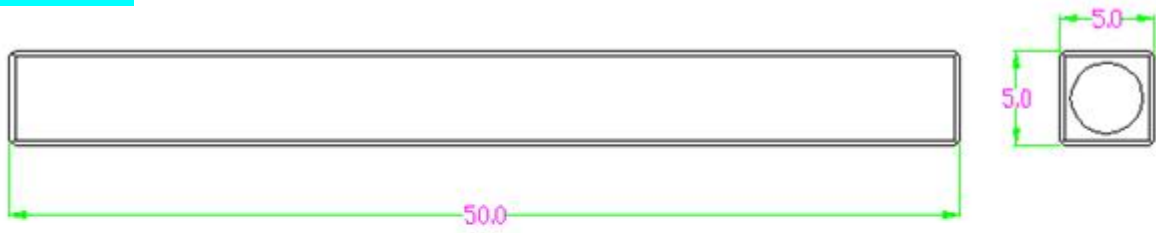
- C1: 50×5×5mm
- C2: Φ4×L60mm
- C3: 70×12×8-3.5mm
- C4: 70×12×8-5mm
- C5: 105×11×7mm

4. Product Ordering Information:

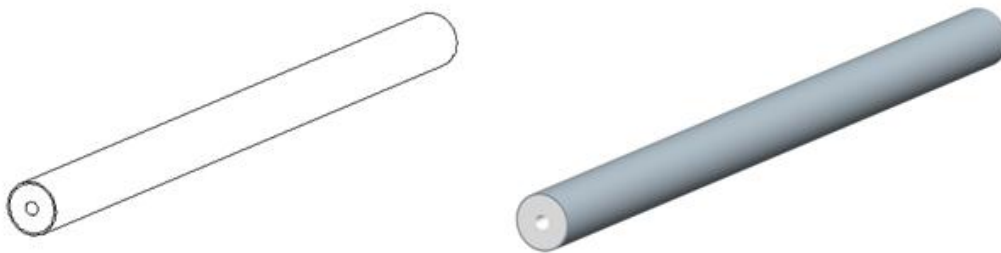
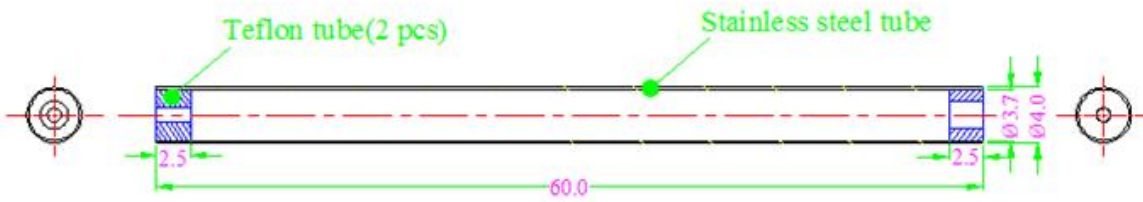
MPC-N×1-XXX-XXX-X



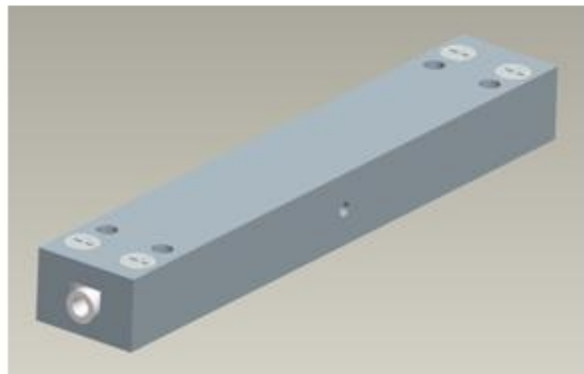
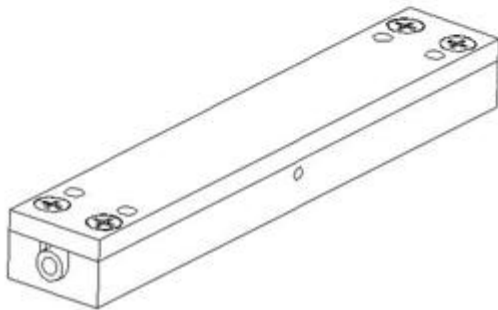
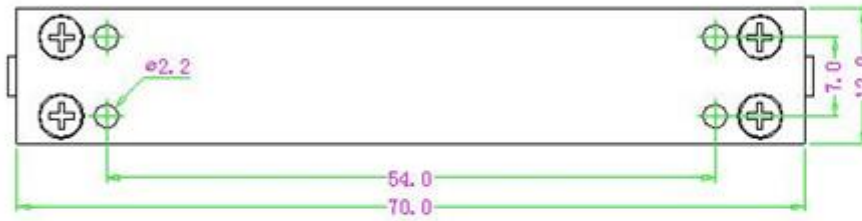
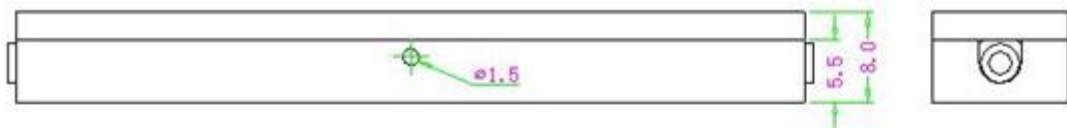
Package C1



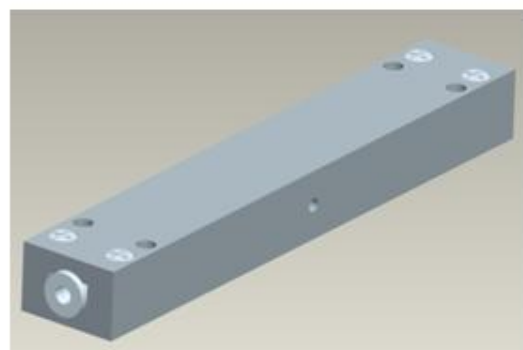
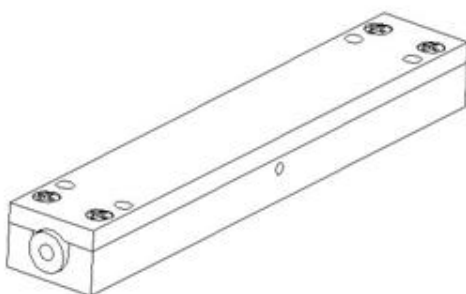
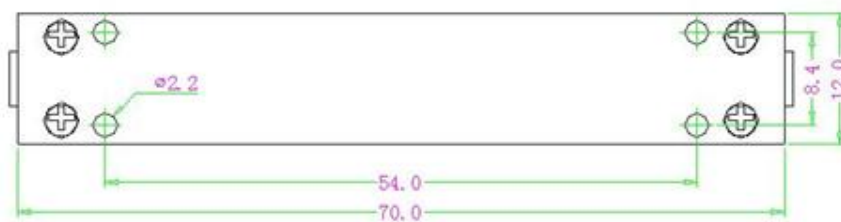
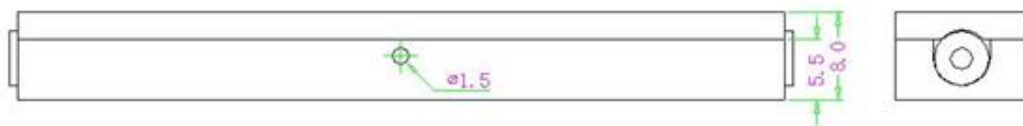
Package C2



Package C3



Package C4



Package C5

